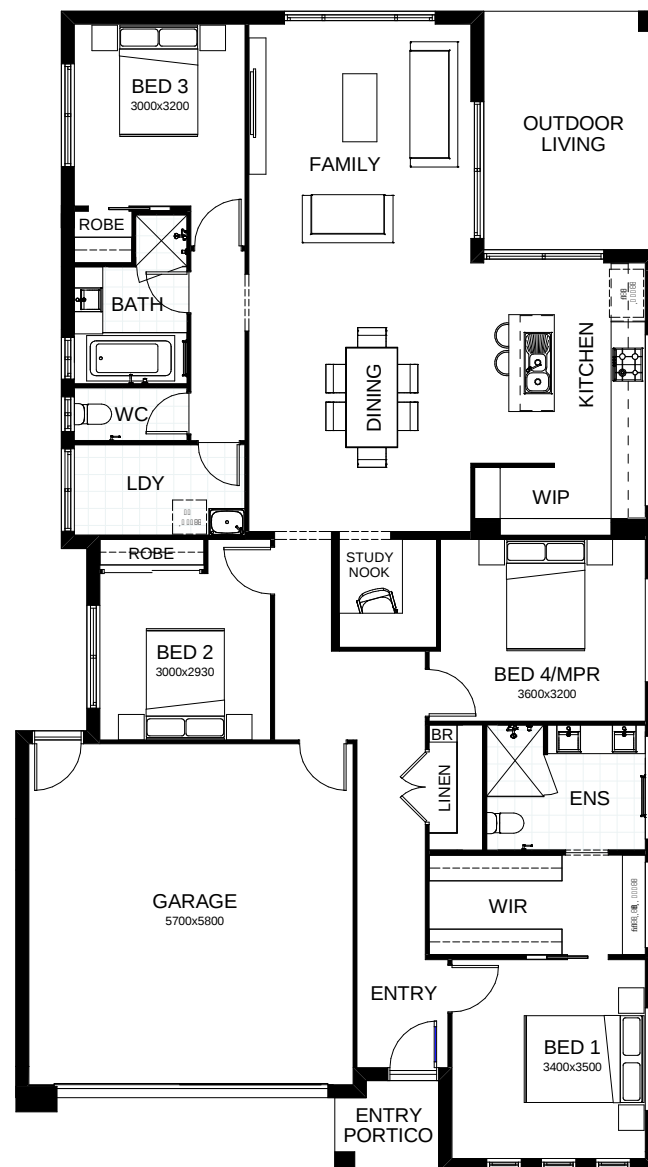
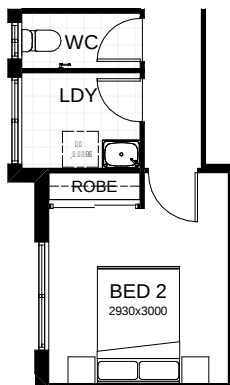
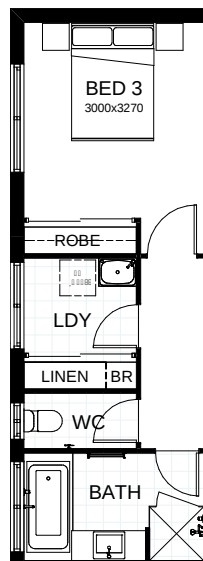
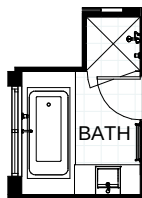


In this design interpretation, the elegant angles of the contemporary façade are counterbalanced by the eclectic interior style. The master suite, complete with ensuite and huge walk-in robe, is positioned for privacy and peace. Three more bedrooms comfortably accommodate the kids, and there's the option to use bedroom four as a multi-purpose room. A study nook is just off the open plan family, dining and kitchen space, which leads out to the outdoor dining area.

 FRONTAGE 12.5m

TOTAL FLOOR AREA 212m²

 EXTERNAL DIMENSIONS 20.43m x 11.3m



BOLD LIVING
create your dream

Your dream home starts here.