

Zeus 333

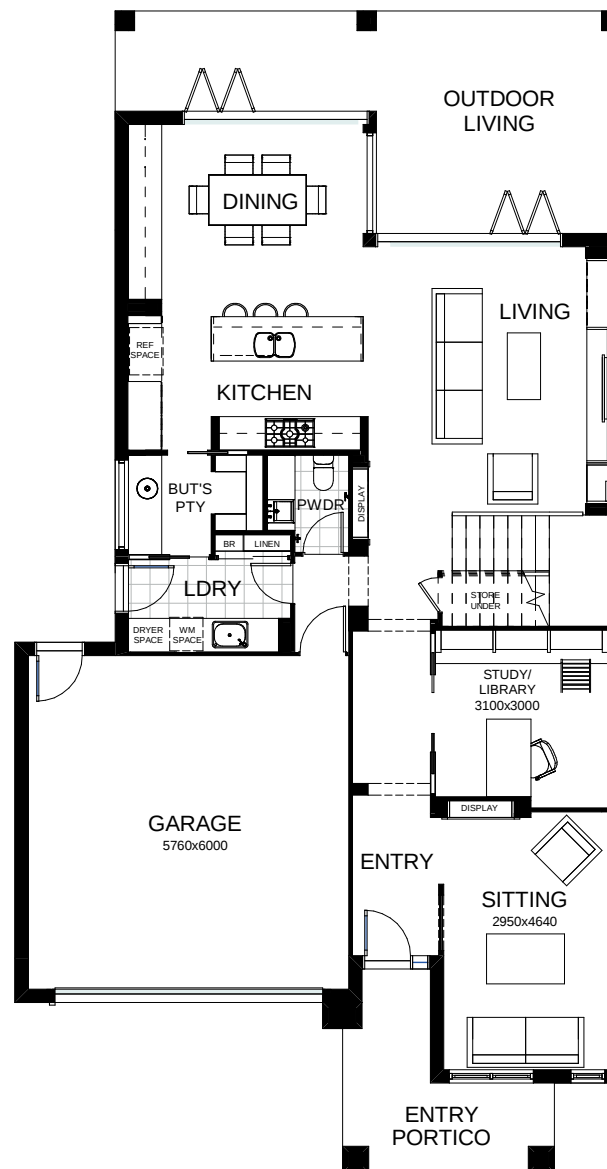
The best of contemporary architecture combines with intelligent design thinking in this two storey residence. Upstairs are four bedrooms, including a grand master suite with a massive walk-in robe, along with a well-placed kids' retreat. On the ground floor there's a large study, a butler's pantry and a walk-in pantry adjoining the open kitchen, with integrated living and dining spaces. Bi-fold doors open out onto the generously proportioned entertaining area.

FRONTAGE 12.5m

TOTAL FLOOR AREA 345.2m²

EXTERNAL DIMENSIONS 20.9m x 10.9m

4 3 2.5 1 2



This document is produced for marketing and illustration purposes and should only be used as a guide. Please note all plans are not to scale, and all images, materials used and inclusions are indicative only. © Copyright of Bold Living. boldliving.com.au

BOLD LIVING
create your dream

Your dream home starts here.