

Sophia M 22

Step inside this home and the sleek modern interior creates an instant impression: it's a celebration of natural materials, symmetry and a seamless flow from the inside to the outside. The master suite includes an ensuite and huge walk-in robe, and there are three more comfortable bedrooms and a study nook, plus the option of using bedroom four as a multi-purpose room. The central hub of the home is the open plan family, dining and kitchen space leading straight to the outdoor entertaining space.

FRONTAGE 12.5m

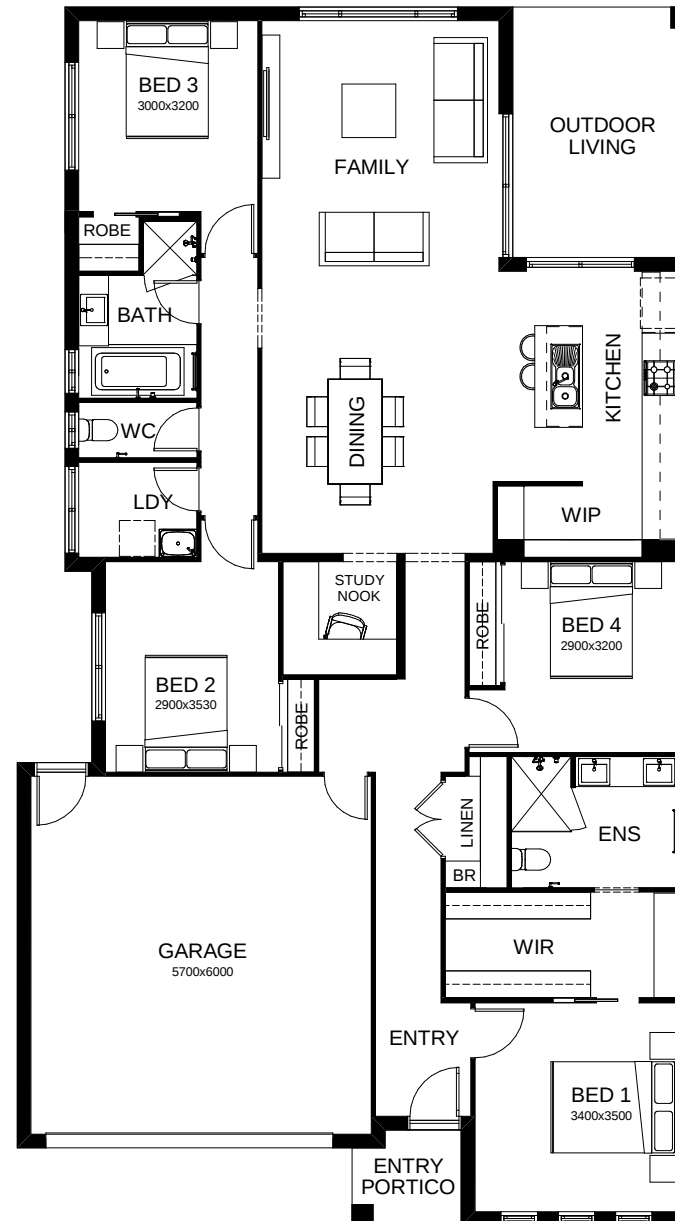
TOTAL FLOOR AREA 212m²

EXTERNAL DIMENSIONS 20.43m x 11.3m

4 1 2 1 2



Your dream home starts here.



This document is produced for marketing and illustration purposes and should only be used as a guide. Please note all plans are not to scale, and all images, materials used and inclusions are indicative only. © Copyright of Bold Living. boldliving.com.au

BOLD LIVING
create your dream