

Sophia 22

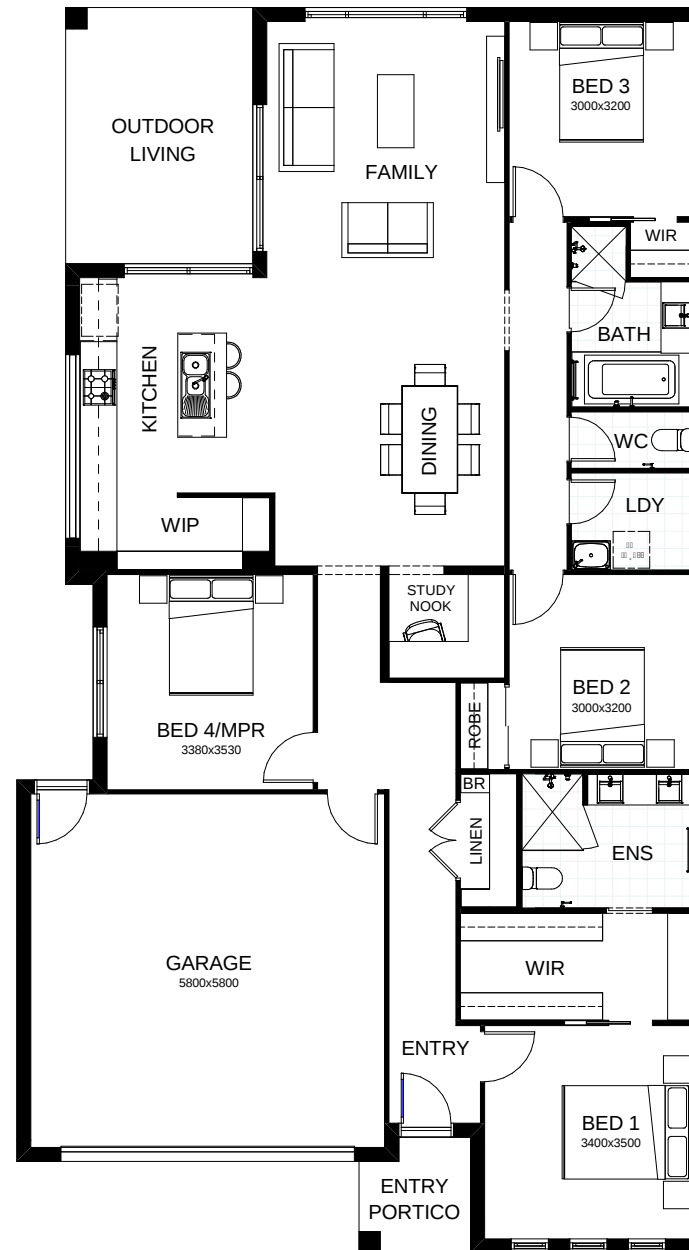
This smart single level design cleverly combines a crisp modern exterior with an interior style that evokes a 'life by the sea' vibe. The master suite, with its ensuite and huge walk-in robe, is situated at the front of the house. There are three more spacious bedrooms and a study nook. The open plan family, dining and kitchen space forms the home's central hub, connecting directly to the outdoor dining area.

FRONTAGE 12.5m

TOTAL FLOOR AREA 210.9m²

EXTERNAL DIMENSIONS 20.43m x 11.3m

4 1 2 1 2



This document is produced for marketing and illustration purposes and should only be used as a guide. Please note all plans are not to scale, and all images, materials used and inclusions are indicative only. © Copyright of Bold Living. boldliving.com.au

BOLD LIVING
create your dream

Your dream home starts here.