

Felix 166

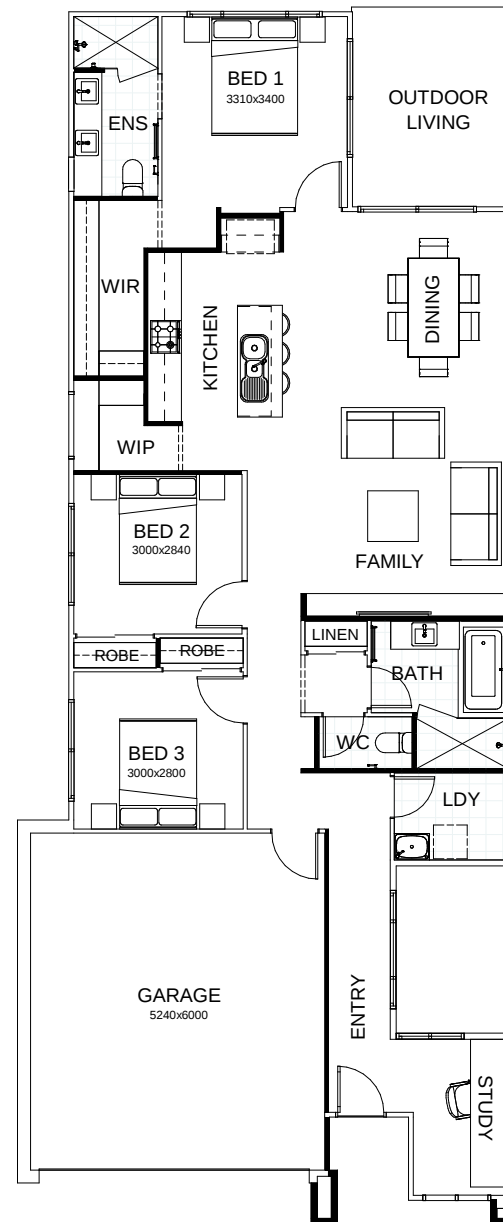
The clever single level design is ingeniously zoned, with all of the bedrooms on one side of the home and living on the other. So when the kids are in bed – that's where they stay, even when you are entertaining! The well-placed kitchen opens hospitably onto the living and dining areas, and there's the bonus of a separate study. Contact us today to customise the Felix home to you!

FRONTAGE 10m

TOTAL FLOOR AREA 166.4m²

EXTERNAL DIMENSIONS 21.57m x 8.9m

3 BEDS 1 SOFA 2 SHOWER 1 TV 2 CARS



This document is produced for marketing and illustration purposes and should only be used as a guide. Please note all plans are not to scale, and all images, materials used and inclusions are indicative only. © Copyright of Bold Living. boldliving.com.au

BOLD LIVING
create your dream

Your dream home starts here.