




Hudson 242

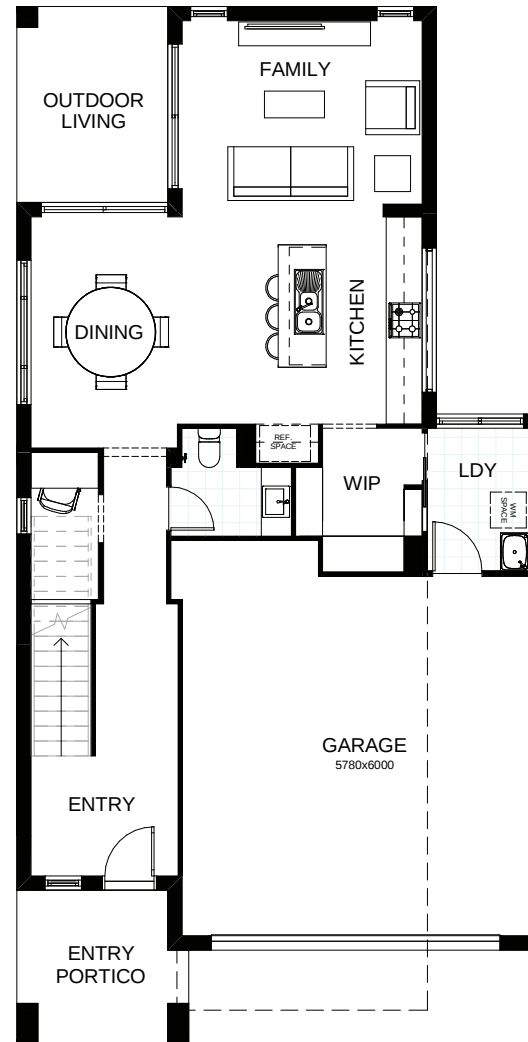
Welcome to two storey living at its best! As you enter, living spaces and a study area are included on the airy open plan ground floor, flowing through to the veranda. Upstairs you'll find all four bedrooms, plus a second living area and an office. The roomy master suite includes a walk-in robe and ensuite. Altogether, this stunning home offers contemporary style and practicality combined.

 **FRONTAGE** 10m

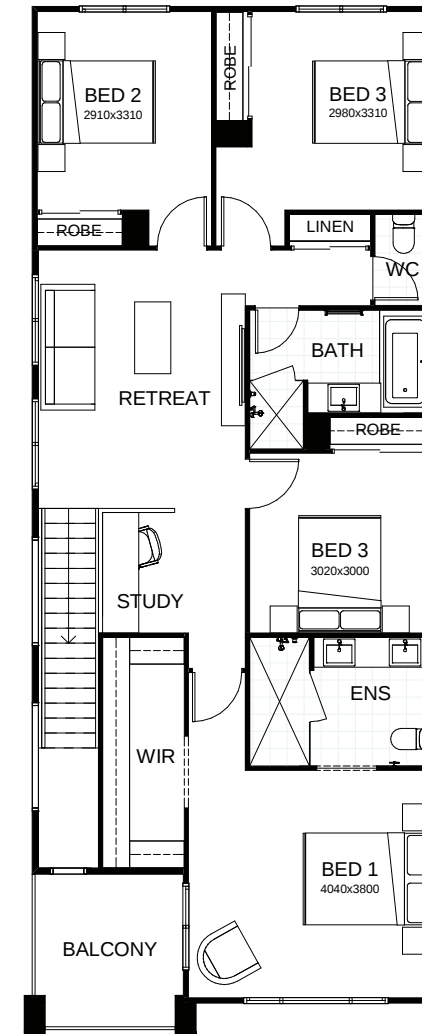
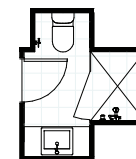
 **TOTAL FLOOR AREA** 242.9m²

 **EXTERNAL DIMENSIONS** 17.35m x 8.78m

 4  2  2.5  1  2



OPTION



This document is produced for marketing and illustration purposes and should only be used as a guide. Please note all plans are not to scale, and all images, materials used and inclusions are indicative only. © Copyright of Bold Living. boldliving.com.au

BOLD LIVING
create your dream

Your **dream home** starts here.