


Emerson 260

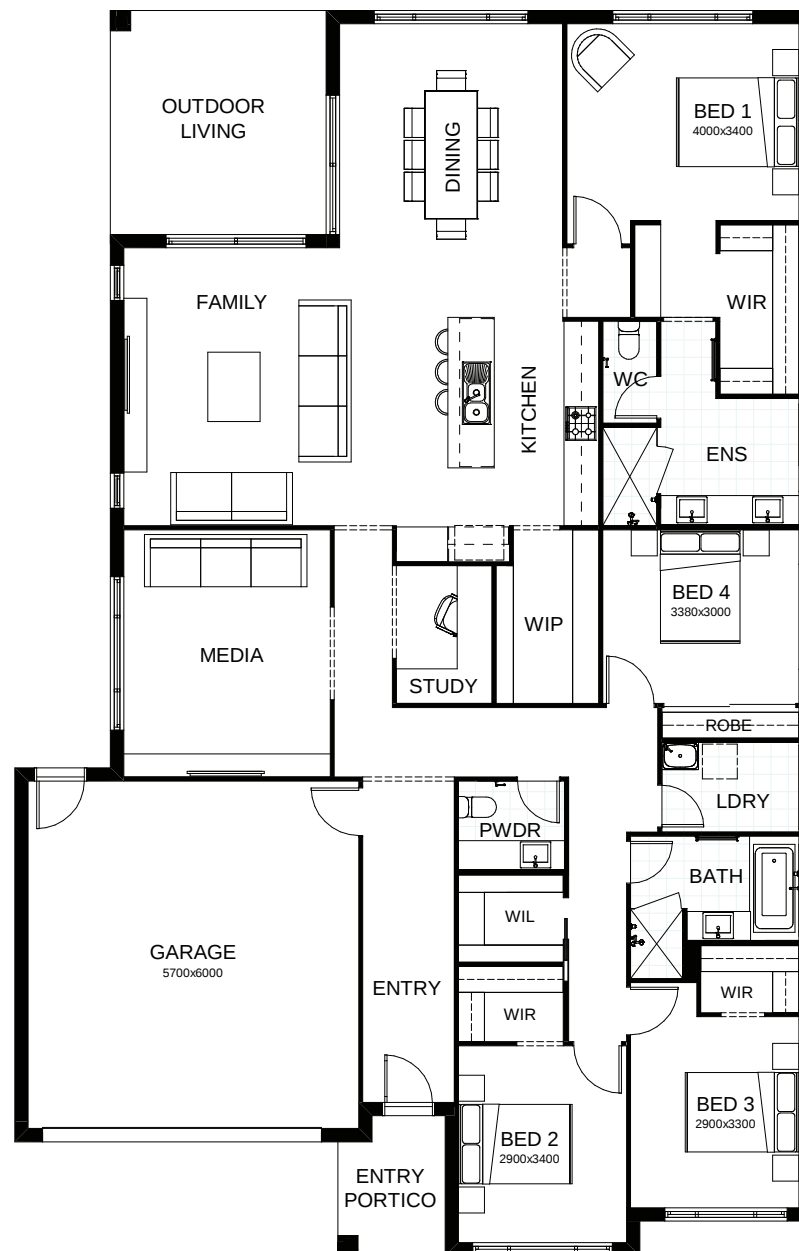
Here's a family home offering all the luxury of space. You'll discover two generous living areas, a media room, a study, and four bedrooms including a master suite that will really impress. The integrated kitchen, living and dining areas are the expansive heart of this home, opening out seamlessly to the outdoor entertaining space.

 **FRONTAGE** 16m

 **TOTAL FLOOR AREA** 260.9m²

 **EXTERNAL DIMENSIONS** 21.51m x 13.75m

 4  2  2.5  1  2



This document is produced for marketing and illustration purposes and should only be used as a guide. Please note all plans are not to scale, and all images, materials used and inclusions are indicative only. © Copyright of Bold Living. boldliving.com.au

BOLD LIVING
create your dream

Your **dream home** starts here.