

Avery 232

If you've dreamed of a home that incorporates all you love, you'll discover it here. The spacious master suite with its generous walk-in robe is the first thing that catches your eye, before the floor plan opens out to a family room, dining space and kitchen that create the central area that life revolves around. There's an outdoor living space for everyone to enjoy, a separate media room and a study nook.

FRONTAGE 12.5m

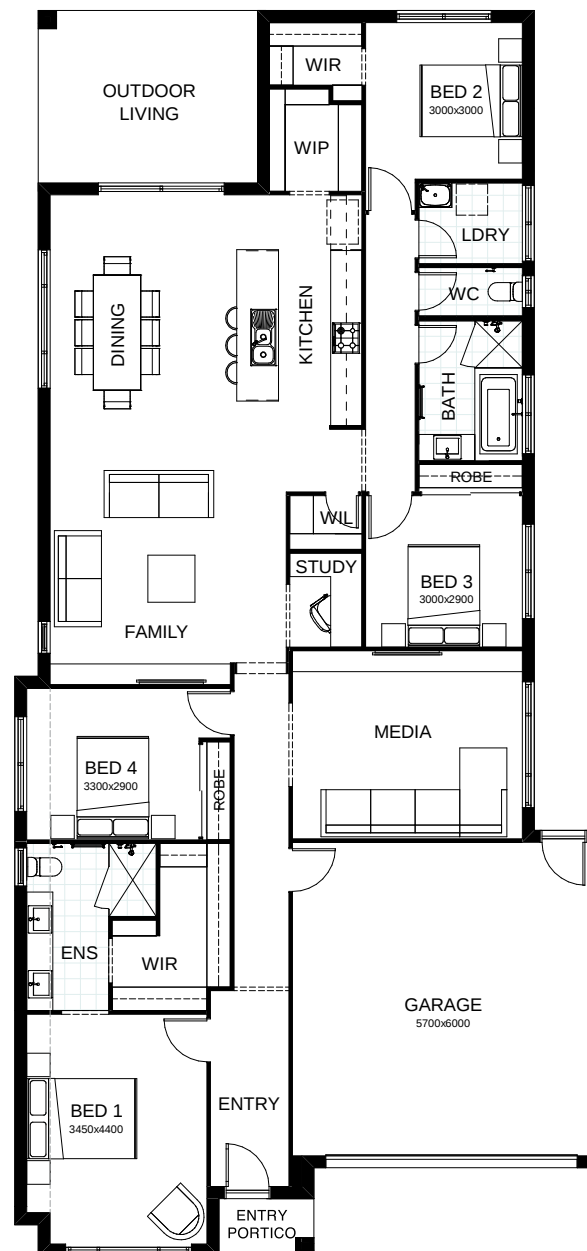
TOTAL FLOOR AREA 232.6m²

EXTERNAL DIMENSIONS 23.85m x 11.25m

4 2 2 1 2



Your dream home starts here.



This document is produced for marketing and illustration purposes and should only be used as a guide. Please note all plans are not to scale, and all images, materials used and inclusions are indicative only. © Copyright of Bold Living. boldliving.com.au

BOLD LIVING
create your dream