

# Finley 265

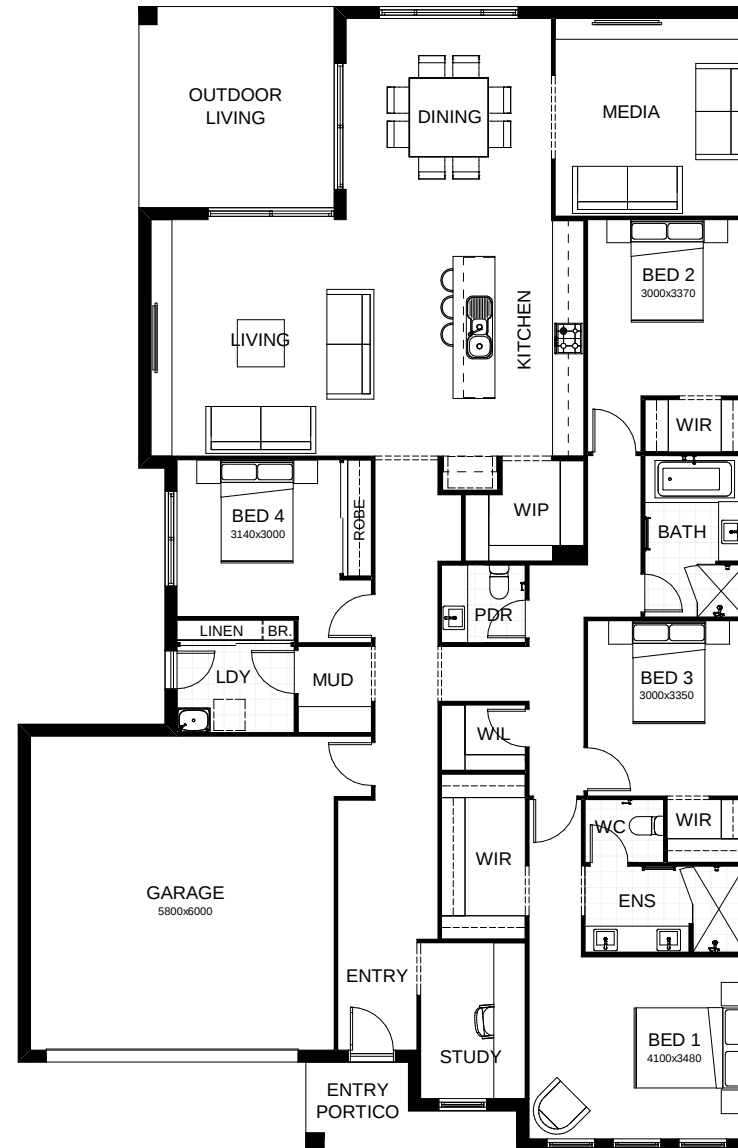
You're looking at a spacious modern home conceived with style and finished with finesse. Four large bedrooms, including a master suite with generous walk-in robes, are just the start. The central kitchen, living and dining rooms are complemented by a second living area/media room and direct access to a covered outdoor entertaining space. There's a private study and a functional, family-friendly mud room.

FRONTAGE 16m

TOTAL FLOOR AREA 265.3m<sup>2</sup>

EXTERNAL DIMENSIONS 21.89m x 14.1m

4 2 2 1 2



This document is produced for marketing and illustration purposes and should only be used as a guide. Please note all plans are not to scale, and all images, materials used and inclusions are indicative only. © Copyright of Bold Living.  
boldliving.com.au

**BOLD LIVING**  
create your dream

Your dream home starts here.