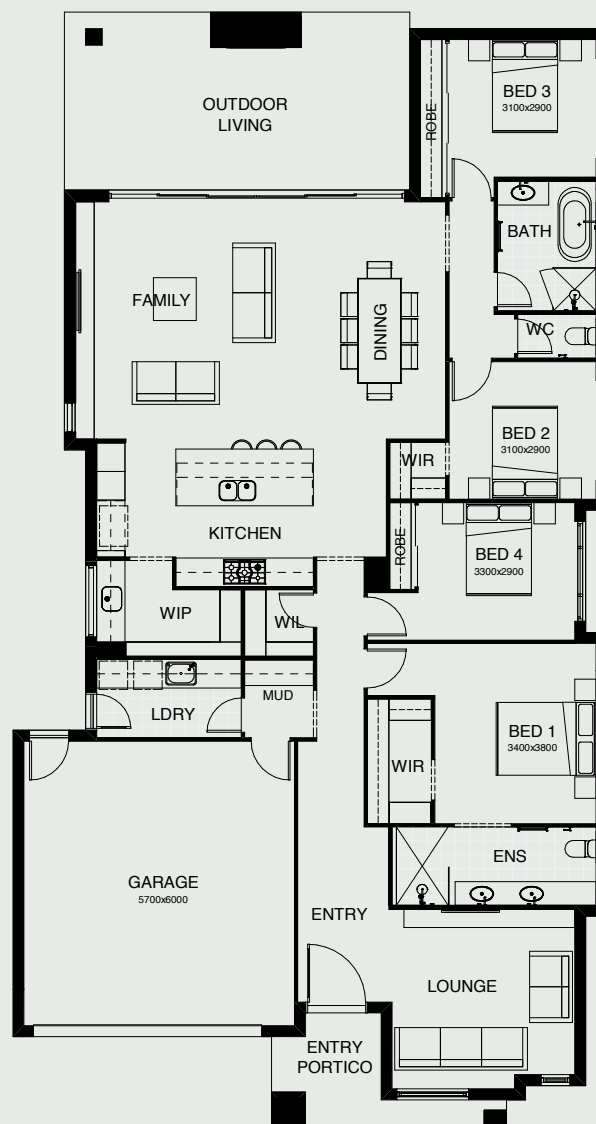


# ASHTON

Introducing a floor plan that's supremely inviting! This 4 bedroom home expertly ticks all the boxes – including an integrated family room, dining space and open kitchen, opening directly onto an outdoor living area that's perfect for entertaining. There's also a spacious master suite complete with a generously-sized walk-in robe and ensuite.



FRONTAGE	14m
EXTERIOR LENGTH	23.25m
EXTERIOR WIDTH	12.52m
TOTAL FLOOR AREA	254.9m <sup>2</sup>



4 | 2 | 1 | 2.5 | 2

*create your dream*

For further information, please visit [www.boldliving.com.au](http://www.boldliving.com.au)

